

<http://www.keystonelearning.org/DirectorBlog>

Announcements and Upcoming Events



April 18: School Psychologists/Social Workers 8:30-11:30/PDC Meeting 4-5

April 19: Keystone Board of Directors Meeting 7 p.m.

April 21: Count Your Kid In Screening at Easton (see info, below)

April 26: WebKIDSS Annual Meeting in Topeka

April 27: SLP/Related Services 8-11

May 1: Keystone Office Staff Meeting 8:15 a.m.

May 2: PDC Meeting 4-5

May 3: Autism Team Meeting 2-4

May 9: Superintendent Advisory Council Meeting 12:30 p.m.

May 11: SLP/Related Services Meeting 8-11/JDLA Student Recognition 7 p.m.

May 12: Early Childhood Staff Meeting 2-4; Count Your Kid In at Lecompton

May 16: School Psychologists Meeting 8:30-11:30; PDC Meeting 4-5

May 17: Keystone Board of Directors Meeting 7 p.m.

COMING IN MAY!



John Dewey Learning Academy will hold a recognition ceremony for 8th grade and senior students on May 11th at 7 p.m. in the Keystone Learning Services' gymnasium.

For more information, contact Brandi at bbarnhardt@keystonelearning.org

JDLA will once again participate in the Ozawkie City Wide Garage Sales on May 5th/6th. Donations now being accepted for gently used & sellable items! These items may be dropped off at the Keystone Learning Services front receptionist desk.

Questions? Contact Brandi at 785-876-2214.



Prepare For 2017 Benefits Open Enrollment New Process May 15th – 25th

- Visit the Keystone Benefit Portal at <http://benefits-direct.com/keystone/> to view benefit plan details
- Decide which way you would like to enroll
 - ✓ Online Self-Enroll: An enroll button will appear on the Benefit Portal starting May 15th
 - May 15th – 23rd
 - ✓ Onsite meeting with a Benefit Counselor: An online link to schedule an appointment will be provided in the Open Enrollment Flyer.
 - May 24th 10am - 7pm
 - May 25th 8am - 5pm
 - ✓ Call Center: The Keystone Learning dedicated Call Center Number will be provided in the Open Enrollment Flyer
 - May 15th – 25th
- Watch for Open Enrollment Flyer Coming Soon



Questions? Contact Jenny Carter or Lisa Morando at 785-876-2214



Keystone offices will be closed Friday, April 14 for Easter break.





Employee SPOTLIGHT



Name: Lushena "Lu" Newman

Current position: Human Resource Manager

Current city of residence: Topeka, KS.

My family: I have been married to my husband for 15 years. I have a stepdaughter who is 20, married, has two step children and a baby of her own. (So I am a grandmother!) I have a stepson who is 18 and will be graduating from high school in May, 2017. I also have my two daughters who are 14 and 15 years old. Next year, I will have two high schoolers living at home with me. Yikes!

Number of years at Keystone Learning Services/NEKESC: I started working with John Dewey Learning Academy in 2011. I was with The Guidance Center and placed at John Dewey. In 2014, I became the Administrative Assistant at JDLA and then moved to the Human Resources Manager position.

What did you want to be when you were younger? When I was younger, I wanted to be an archeologist. I loved the Indiana Jones movies and thought it would be cool if I could be like Indiana Jones. I even wanted a hat like him.

What is something that people would be surprised to know about you? I spent a summer working at Glacier National Park in Montana, and I hiked over 200 miles in that park. I even encountered a grizzly bear along a trail and I didn't become bear food. I also spent about 2 and half weeks hiking the Appalachian Trail, from Georgia to North Carolina, and I encountered a black bear on that trip. I have a couple of pots and pans that have holes in it from the black bear. Ask me about my bear stories sometime when you see me!

Motto: Mother Teresa is someone I have always admired. She has many great quotes and words to live by but the quote that I try to live my life most like is this:

People are often unreasonable and self-centered.
 Forgive them anyway.
 If you are kind, people may accuse you of ulterior motives.
 Be kind anyway.
 If you are successful, you will win some false friends and some true enemies.
 Succeed anyway.
 What you spend years building someone can destroy overnight.
 Build anyway.
 If you are honest, people may cheat you,
 Be honest anyway.
 If you find happiness, people may be jealous,
 Be happy anyway.
 The good you do today may be forgotten,
 Do good anyway.
 Give the world your best and it may never be enough,
 Give your best anyway.
 For you see, in the end it is between you and God,
 It was never between you and them anyway.

Early Childhood Special Education Peer Model Program

Keystone Learning Services sponsors Early Childhood Special Education (ECSE) classrooms in local school buildings. These preschools are designed for children 3 to 5 years of age who qualify for services in areas such as communicating, learning, hearing, vision, moving or socializing. Currently these programs are housed in Meriden, Oskaloosa, Valley Falls, and Easton. **To enhance the program, children who are developing typically have been accepted as peer models.**

Peer Model applications are currently being accepted for the 2017-2018 school year. **Names will be randomly selected in a drawing** that takes place in July. The application deadline is June 30, 2017.

Peer models must reside in one of the eight school districts served by Keystone Learning Services or have a parent that is employed by a hosting district. It is preferred that peer models be 4 years old on or before September 1st. However 3 year olds will be considered. Children must be potty trained.

Parents of peer model students are responsible for their child's transportation to and from the school. All children attending the pre-school must have proof of immunizations and the child health assessment required by the state of Kansas.

Children applying for peer model positions will need to be screened at a Count Your Kid In screening to verify that the child is not experiencing developmental delays. **Children must be screened by June 30, 2017 to qualify for the drawing.**

Please contact Lesa Brose at 785-876-2214 ext. 201 or at lbrose@keystonelearning.org to make a CYKI appointment or get more information concerning our peer model program.

Laff with G-Raf



"I wouldn't say your son is a bad child.
He's gifted at disruptive behavior."

Staff Shares

If you have anything newsworthy you would like to submit, please email Linda K. Chalker at lindak@keystonelearning.org. Please note there is a deadline for submission, so get your news in early!

The deadline for article/news submission will be by the 12th day of each month.



5 GREAT BLOGS TO FOLLOW

Below is a list of 5 great blogs to follow for parents or teachers of special education students.

Reality 101 <http://cecblog.typepad.com/cec/>

The council for Exceptional Children maintains this blog along with the help of several special education teachers who share their experience and advice.

Special 2 Me <http://bit.ly/2n80JUp>

The woman behind this blog is both a teacher and a parent of special needs children.

ThoughtCo. <http://bit.ly/2n7VFPM>

Blogger and teacher Jerry Webster shares the basics of special education here, as well as some helpful insights from his own experiences in the classroom.

Friendship Circle <http://www.friendshipcircle.org/blog/>

Friendship Circle is part of the Special Needs Resource Network and offers helpful and useful articles for special education teachers.

verywell <http://bit.ly/2nANUNP>

“Using Boardmaker Online in Your Classroom”

Beth Zillinger, MS, CCC-SLP, Infinites Kansas State Consultant, led Boardmaker training on April 13th for Keystone staff members.



Check out the Boardmaker home page at: <https://www.boardmakeronline.com>

KANSAS ASSOCIATION OF SCHOOL BOARDS

April 2017

Guard Against Slips and Falls

1. In 2013, how many people died as a result of a fall?
a. 10,000 b. 20,000 c. 30,000

Answer: c. According to the Centers for Disease Control, only motor-vehicle crashes and unintentional poisoning killed more people. One in four visitors to a hospital emergency room is there because of a fall.

2. What percentage of falls occur at home?
a. 10 b. 25 c. 40

Answer: c. So says the U.S. Consumer Product Safety Commission. Since we spend more time at home than anywhere else, that's where we're likely to fall.

3. True or False? Most fatalities resulting from falls involve sporting events like mountain climbing or parachuting.

Answer: False. Fewer than 4 percent of falling fatalities involve sports. According to the Consumer Product Safety Commission, more people died as a result of tripping on a level surface (2.4 percent) than in mountain climbing (1.9 percent).

4. What accounts for the most falls that result in death?
a. Ladders b. Stairs and steps c. Slippery tile

Answer: b. More than 42 percent of falling deaths result from stairs and steps, according to the CPSC. Beds rate second at 10 percent, while ladders account for 9 percent.

5. If you're over 65, what are your chances of falling?
a. 1 in 20 b. 1 in 5 c. 1 in 3

Answer: c. According to the American Academy of Orthopedic Surgeons, seniors have a 33 percent chance of falling in any year.

6. True or False? You should have your hearing checked annually to prevent a fall.

Answer: True. Hearing plays an important part in balance and space perception. You should also have your eyes checked regularly.

7. True or False? Depression causes people to fall more often.

Answer: False. However, some medications used to treat depression and other diseases can leave people dizzy or disoriented and more susceptible to falls. Review your medications with your doctor to see if they cause balance problems.



If at any time you need to schedule a meeting in the conference room at Keystone, please contact Linda K. Chalker at lindak@keystonelearning.org

Count Your Kid In!

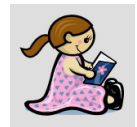
2016-2017 Screening Schedule



Call today to schedule a free appointment for your child at one of these locations:

April 21-Easton

May 12-Lecompton



FREE INFANT and PRESCHOOL SCREENING CLINICS



Keystone Learning Services and the Jefferson County Health Department offer Count Your Kid In clinics throughout the school year for infants and preschool children, free of charge. If you have concerns about your child's development, this free screening will provide help for children 0-5 years of age. Children are screened in areas of speech/language development, motor development, concept development, social skills, vision and hearing. Trained professionals in these areas will screen your child. Screenings take place in local community settings and last approximately 1½ hours. Contact Lesa Brose at Keystone Learning Services at 785-876-2214 ext. 201 to schedule an appointment.

April Screening Information

WHEN: Friday, April 21, 2017

WHERE: Pleasant Ridge Elementary, 20753 Easton Rd., Easton, KS



500 E. Sunflower Blvd.
Ozawie, KS 66070
Phone: 785-876-2214
Fax: 785-876-2383

www.keystonelearning.org