

THE KEYSTONE

Special Edition

From the Director's Desk.....

August is one of my favorite times of the year. It is a time of goal setting and anticipation for students and teachers alike and very soon our empty hallways will fill with laughter and excited voices again. It is at this time of year that a special person comes to mind and a question "Who will be Mrs. Lehmann this year?"

As a new teacher at Sabetha Elementary, I was full of anticipation and wanted to get off to a good start - as all new teachers do. I found myself working long hours in my classroom long before the beginning of school. Often I was the only teacher in the building that summer but on occasion there was another teacher working in her classroom across the hall. She was a veteran teacher and a consummate professional. It turned out that her son played football at the high school where I was the new assistant coach so we had much in common and we hit it off immediately. This great teacher took me under her wing and helped me in more ways than I can count. I found myself going to her for just about everything. Need border material? Carol had it. Bulletin board ideas? How to run the laminator? How to unjam the copier? Carol knew the answers. When school began I was truly ready!

In those days of whole class, whole language reading instruction, I would look to Carol for ideas about how to differentiate instruction for my students who were struggling to keep up. Carol was a special education teacher you see and was well versed in differentiated instruction and universal design for learning long before they became systemic efforts in the school improvement process.

Carol's advice didn't end with academic challenges. It was important for new teachers to build a positive presence in the community she said. She encouraged me to attend church with her. She cautioned that teachers who were seen going in to the liquor store just outside of town would undoubtedly be reported to the principal and that teachers must always use appropriate language, in school and out. She was right and I have to confess that I was guilty of the first offense (although for medicinal purposes only I assured the principal) but never the second.

Mrs. Lehmann was always there for me and had an answer for every one of my questions. I was blessed with excellent students and it was a joy to go to school each day. My time with students was time spent having fun, laughing and learning - and Mrs. Lehmann was a big part of our successes. She wasn't just there for me mind you, she was a mentor throughout the building and across her profession. She was highly regarded and had the honor of being asked to give the commencement address at the K-State College of Education Graduation Ceremony. Soon after that career highlight Carol unexpectedly passed away. I still think of her as each school year starts and I wonder, "Who will be Mrs. Lehmann this year?" It's up to each of us to rise to that challenge.

Andy



ISSUE 2, AUGUST, 2015

Keystone Learning Services

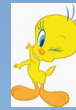
500 E. Sunflower Blvd.
Ozawkie, KS 66070

785-876-2214

www.keystonelearning.org

GET CONNECTED!

Find us on Facebook
(Keystone Learning Services)
and



Twitter
@KeystoneLeading

And for JDLA's Twitter:
@JDLA_KLS

Keystone Learning Services
OFFICE HOURS

8:00 a.m. - 4:30 p.m.
Monday - Friday

LEARNING IS A TREASURE THAT
WILL FOLLOW ITS OWNER
EVERYWHERE.

Chinese Proverb

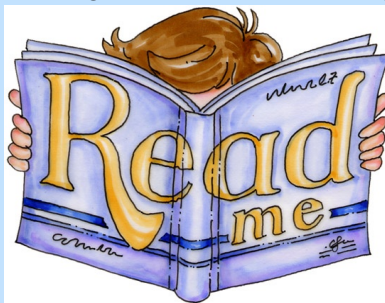
News out of the Business Office

We are wrapping up benefit enrollments for the year. If you have any questions, please contact Jenny Carter ASAP. We appreciate all your patience during this time of change.

Please remember to complete timecards neatly and write any exception to your normal daily schedule on the back of the time card. Finally, as a reminder, mileage is not paid to and from the back to school inservices.

Media Center

The Business Office has taken over the operations of the media center. If you are needing any material, please email mediacenter@keystonelearning.org. This information will be delivered through media mail on the JDLA vans like last year. The media route will follow the Oskaloosa schedule. Please utilize the items in the media center. We have lots of good items that are sitting on shelves that we would love to see in classrooms with children.



From the Kitchen....

MEET KEYSTONE/JDLA FOOD SERVICES DIRECTOR, FELICIA RICHTER!

Felicia joined the team December 2014 and has jumped right in cooking healthy meals for the students and staff.

If you would like to reach Felicia:
frichter@keystonelearning.org
or call 785-876-2214 ext 227

We will be welcoming our JDLA students back on Thursday, August 20th.

Menu for Thursday 8/20

Breakfast: Pancakes

Lunch: Cheeseburgers

Menu for Friday 8/21

Breakfast: Bagel Bites

Lunch: Hot Dogs

Please check the newsletter in the coming months for more information, fun food facts and to find out what's happening in the kitchen!



Important Upcoming Events

Wednesday,
August 19th:

*Keystone Board of
Directors Meeting*

Thursday,
August 20th:

*JDLA First Day of
School*

Monday
September 7th:

Labor Day

*Keystone Learning
Services CLOSED*

*JDLA
No School*

Tuesday
September 8th:

*ACT Test Prep
at
Keystone Learning
Services*

And

*Superintendent
Advisory Council
Meeting-12:30 p.m.
Location:
Oskaloosa District*

Tuesday
September 15th:

*IPEC Leadership
Coaching Training
Series: Inspired
Leadership,
Session III
at
Keystone Learning
Services*



What are **Executive Function Skills**?

How do students use **Executive Function Skills** to learn?

Can I help my students use improve their **Executive Function Skills**?

Want to learn more about Executive Functioning Skills in the classroom?

Checkout the Online Classroom: Organization/Study Skills

- 1) Overview of Executive Functioning by Sara Ward, MS, CCC-SLP
- 2) Executive Function Tools by Karen Janowski

Late, Unprepared and Unorganized: Technology Tools to Support Executives --
Checkout Karen Janowski, AT National Consultant --LIVE at Keystone Learning Services
on October 16, 9:00 AM – 3:00 PM. See the registration form for more information at

<http://goo.gl/EhwRFn>

or



For more information about Infinitec contact:

Cindy Malone, MA, CCC-SLP – cmalone@keystonelearning.org

Beth R. Zillinger, MS, CCC-SLP – bzillinger@keystonelearning.org



Do you suspect a student has Autism?

Do you need help with classroom programming for a student with Autism?

Do you need help with a social skills program for a student with Autism?

Contact your local Keystone Learning Services Autism Consultant or Autism Interdisciplinary Team.



A referral form is located on the

Keystone Website @ <http://goo.gl/nLj6Ej> or Beth Zillinger, MS, CCC-SLP, Keystone Learning Services Autism Consultant bzillinger@keystonelearning.org (785) 876-2214 ext. 224

All Keystone Autism Interdisciplinary Team Members have completed the TASN-Autism and Tertiary Behavior Supports Autism Interdisciplinary Team Training and/or Autism Diagnostic Team Training.

Keystone Autism Interdisciplinary Team Members include:
Amy Conklin, Stacy Diehl, Hana Dreiling, Michaela Driscoll, Cindy Malone, Kara Mitchell, Elizabeth Schmelzle, Becky Stewart, Janet Tust, Tyson VanDyke, Kim Wheeler, Kathy Young

Assistive Technology

What is Assistive Technology?

Assistive technology assists individuals with a variety of needs by improving their ability to access environments and their day-to-day functioning in activities such as daily living, listening, computer or electronic access, augmentative alternative communication or academic areas.

What does the Keystone Assistive Technology Team do?

- collaborate with educators and families about assistive technology
- increase educators' knowledge of assistive technology
- increase availability of assistive technology for all students with disabilities
- increase utilization of assistive technology services for all students with disabilities

When do I contact the Keystone Assistive Technology Team?

- I need ideas to help my student become more independent in accessing his or her curriculum.
- I need ideas to help my student become more independent in his or her daily living skills.
- I want more information about assistive technology at Keystone.

How do I contact the Keystone Assistive Technology Team?

Referral form and contact information is located on the Keystone Website at: <http://goo.gl/XBwirM> or



Or

Contact a Keystone AT Team Member

Keystone AT Team Members:

Emily Bare, Stacy Diehl, Darcie Hearn, Cindy Malone, Kara Mitchell, Pederson, Carol Snyder, Abby Strathman, and Beth Zillinger (Team Coordinator)

Getting in Gear for the New School Year!



Para Inservice, 2015

Welcome Back

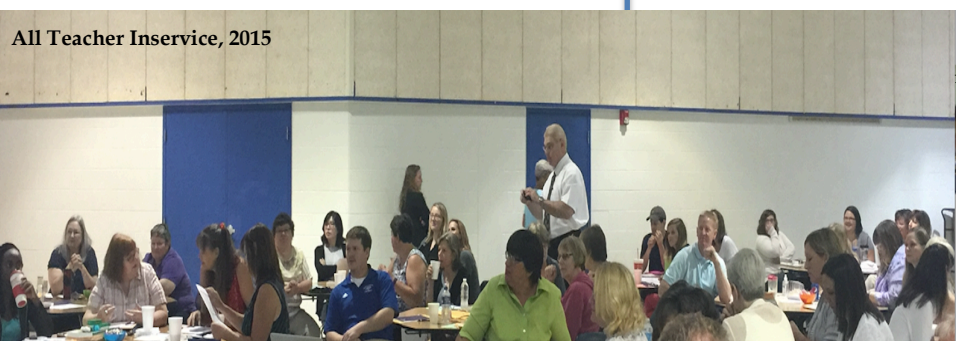
Teacher and Para Inservices were held on August 7th and 11th, respectively.

Welcome back teachers and paras!



Para Inservice, 2015

Photos courtesy of Lindsey Graf.



All Teacher Inservice, 2015



All Teacher Inservice, 2015

Back to School All Para Inservice

On Tuesday, August 11, Keystone welcomed back the para educators who serve our eight school districts. The Keystone Food Service Director, Felicia Richter, began the day for us with yummy cinnamon rolls, breakfast biscuits and plenty of coffee and juice. Thanks, Felicia, for your efforts in getting the day off to a great start!

Andy Ewing, the new Executive Director/Special Education Director, welcomed staff to the new school year. He expressed his gratitude for the hard work that para-educators provide without which, schools simply could not succeed.

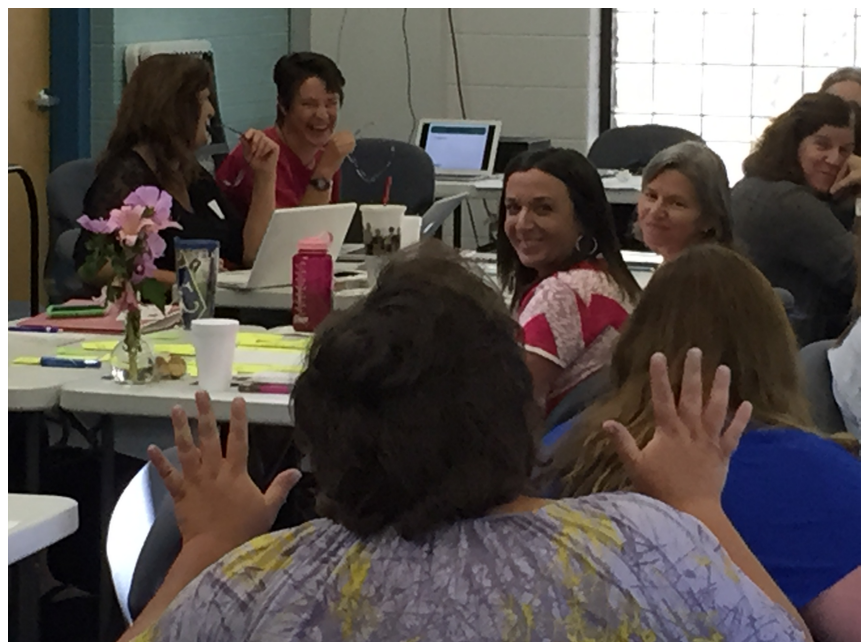
Lindsey Graf, Keystone's new Assistant Director of Special Education, led the group in The Tree of Life activity in which the "rings" of a tree are formed with people. Those paraeducators with less than five years of experience make up the outer bark and rings of the tree and represent new energy, new life. The second ring consists of paraeducators who have served Keystone for 5 to 10 years, followed by the 10-20 year ring, then the 20 to 25 year ring. The core of the tree was comprised of paraeducators with experience of thirty years or more and represents the experts who have "seen it all". If we only had the bark, the tree could not stand. With only the outer rings, the tree could not survive the wind, and without the core the tree could not grow tall and strong. Like the tree, we are stronger when we are together building off of each other and using each other to draw strength from.

Along with Ms. Graf, Assistant Director Mary Livingston and Keystone Education Consultant Mary Getto presented Para Pro by Dr. Randy Sprick of Safe and Civil Schools. The prefix para- is defined as, "at the side of, beside, alongside of." A paraeducator, therefore, is a person who works alongside of the teachers, specialists, and administrators in a school. The job of a paraeducator is neither simple nor easy so the purpose of the presentation was to provide information that will help them function effectively and successfully as a paraeducator. Key words from the presentation included: ***Professional, Positive, Persistent, Patient, Planful.***

Staff enjoyed a catered lunch from Planet Sub out of Topeka, which was provided courtesy of the Keystone Board of Education.

~Mary Livingston, Assistant Special Education Director, Keystone Learning Services

Inspired Leadership Training—A Great Success!



August 13th, 2015.

Photos courtesy of Andy Ewing

Staff Shares

This newsletter's main purpose is to communicate information and share news and happenings! If you have anything newsworthy you would like to submit, please email Linda Kilgore at lindak@keystonelearning.org. Please note there is a deadline for submission, so get your news in early!

The deadline for article/news submission will be by the 12th day of each month.

Approved photos, stories and poetry are welcome!

ANNOUNCEMENT!!!!



**Congratulations to
Tim and Abby
Strathman on the
recent birth of their
baby boy!!!**

Keystone Media Mail

Media mail routes will begin picking up and delivering mail on August 20th. For help or questions, contact:

Melody Malone mmalone@keystonelearning.org or

Karla Bradford kbradford@keystonelearning.org

Classroom Tip!



Alarming Time Management

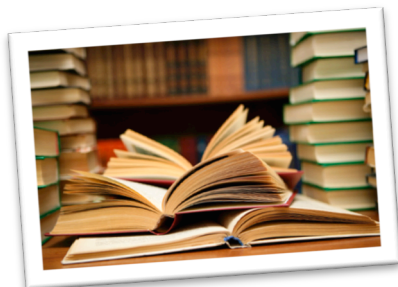
A simple way to keep you and your students on time: "When I was a classroom teacher, my class and I would often get involved in lessons, and the time for lunch and specials would creep up on us. In order to help us out, I used a clock radio and set it for the music to come on about five minutes before we needed to be in another location. This warning really helped me with time management."

Submitted by: Bobby Stern, a curriculum coordinator at Piney Grove Elementary School in Kernersville, North Carolina. This tip was published in the [NEA's](#) Weekly Tip Newsletter.

If at any time you need to schedule a meeting room or the conference room at Keystone, please contact Linda Kilgore at lindak@keystonelearning.org



Copyright © Dennis Cox * <http://BusinessClipart.co/1027>



**“The Love of Learning,
The Sequestered Nooks,
And All the Sweet Serenity
Of Books.”**

~Henry Wadsworth Longfellow



What is Parents as Teachers?

Parents as Teachers (PAT) is a free early learning program for prenatal families and families with children up to age 3.

PAT provides personal visits, screenings, resource networks, referral, and group connections.

Why Join?

- To learn more about your child's growth and development
- To receive research-based, practical answers to parenting questions
- To create an eager learner who is ready for school
- To build a stronger relationship with your child
- To get a "PAT on the back" for all the things you do so well as a parent

Research shows:

- **PAT children**, at age 3, were significantly more advanced in language, social development, problem solving and cognitive skills.
- **PAT children** outscored their peers on measures of school readiness and later school achievement.
- **PAT** was found to reduce placement in special education and to lower the incidence of abuse and neglect.
- **PAT parents** took a more active role in their children's schooling than non-PAT parents.

Keystone PAT provides services in the following districts: Doniphan West, Prairie Hills, Riverside, Holton, Valley Falls, Jefferson North, Oskaloosa, McLouth, Perry/Lecompton, Seaman, Atchison County, Atchison, Hiawatha, Troy, Easton, Tonganoxie, and Eudora.

To Enroll in PAT: Call: 785-876-2214 OR Email: cbraden@keystonelearning.org

Count Your Kid In!



Call today to schedule a free appointment for your child at one of these locations:

September 18, 2015-Perry

October 16, 2015-Oskaloosa

November 20, 2015-Meriden

December 11, 2015-Valley Falls

January 15, 2016-McLouth

February 19, 2016-Effingham

March 4, 2016-Nortonville

April 15, 2016-Easton

May 13, 2016-Lecompton

June 10, 2016 Oskaloosa

FREE INFANT and PRESCHOOL SCREENING CLINICS

Keystone Learning Services and the Jefferson County Health Department offer Count Your Kid In clinics throughout the school year for infants and preschool children, free of charge. If you have concerns about your child's development, this free screening will provide help for children 0-5 years of age. Children are screened in areas of speech/language development, motor development, concept development, social skills, vision and hearing. Trained professionals in these areas will screen your child. Screenings take place in local community settings and last approximately 1½ hours. Contact Lesa Brose at Keystone Learning Services at 785-876-2214 ext. 201 to schedule an appointment.

September Screening Information:

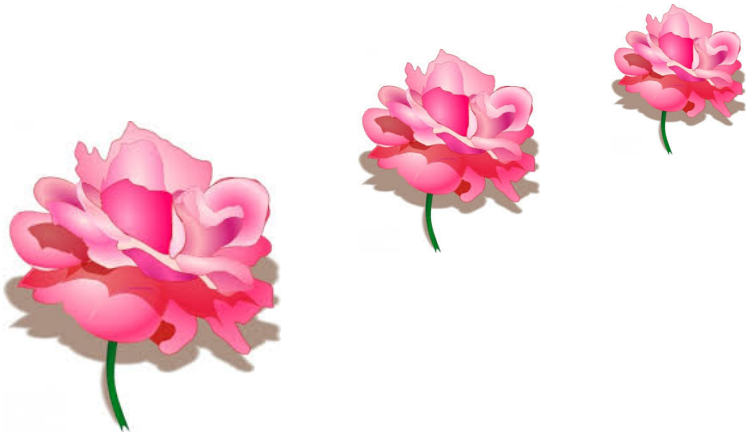
WHEN: Friday, September 18, 2015

WHERE: Perry United Methodist Church, 220 Oak Street, Perry, KS

Coming Up Next Issue: Fall -Just Around the Corner.....

'Tis the last rose of summer,
Left blooming alone;
All her lovely companions
Are faded and gone.

~Thomas Moore



500 E. Sunflower Blvd.
Ozawie, KS 66070
Phone: 785-876-2214
Fax: 785-876-2629

www.keystonelearning.org