

# THE KEYSTONE

## Special Edition

### *From the Director's Desk.....*

School choice and vouchers have become one of the dominant conversations in the education world and this is especially true in special education circles. Much of the conversation points to what's wrong or what could go wrong with specific school choice models.

Here at Keystone, and throughout much of Kansas, the options for students are limited. That's not likely to change any time soon. Before we dismiss the subject because it's not likely to affect us, perhaps we should give it some thought. Most of us would agree that having choices, especially as consumers, is a good thing. Maybe we can rethink what we do in order to offer greater choice inside of the schools we have. Here's what Randy Watson, our Commissioner of Education in Kansas had to say recently about the Kansas Can vision, and building choice into our schools. It is powerful.

<http://bit.ly/2lp39M3>

Thanks for all you do.

Andy

### ISSUE 6, FEBRUARY, 2017

Keystone Learning Services

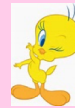
500 E. Sunflower Blvd.  
Ozawkie, KS 66070

785-876-2214

[www.keystonelearning.org](http://www.keystonelearning.org)

### GET CONNECTED!

Find us on Facebook  
(Keystone Learning Services)  
and



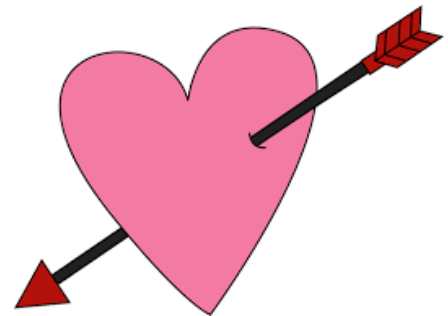
Twitter  
@KeystoneLeading

And for JDLA's Twitter:

@JDLA\_KLS

Keystone Learning Services  
OFFICE HOURS

8:00 a.m. - 4:30 p.m.  
Monday - Friday



# Announcements and Upcoming Events



February 21: School Psychologists/Social Workers Meeting 8:30-11:30

February 24: Count Your Kid In Screening at Effingham  
\*(See below for more info)

March 4: Regional Science Fair, Keystone gymnasium 8-12

March 6: Keystone Office Staff Meeting 8:15 a.m.

March 7: Superintendent Council at Noon; PDC Meeting at 4

March 9: Online Boardmaker Training, all day (exact times to be announced)

March 15: Keystone Board of Directors Meeting 7 p.m.

Spring Break week for districts as well as JDLA is March 20-24.

The Keystone Learning Services offices will remain open during this time.

## BUILDING NEWS

The Keystone office in Ozawkie has a new security buzz-in system at the front of the building. For security purposes, the doors remain locked from 8 a.m.-4:30 p.m., Monday-Friday.

When the weather warms up, the handicapped parking at the Keystone office will be marked clearly and placed near the front entrance.

**In other news,** The Jefferson County Health Department will begin using a new agency phone number beginning Wednesday, February 8<sup>th</sup>. The new number is 785-403-0025. The current number (785-863-2447) will remain in use for 30 days beginning February 8 and will no longer be in use after Thursday March 9<sup>th</sup>. Make sure to update your info if you live in Jefferson County!

Happy  
Valentine's  
Day





## Employee SPOTLIGHT

**Name:** Dan Hinrichsen

**Hometown:** Lecompton, KS

**Current city of residence:** Topeka, KS

**Inhabitants at Dan's residence:** His wife, Erin and a dog, Addie (mutt)

**Current position:** Technology Director

**Number of years at Keystone Learning Services/NEKESC:** 17 years

**The hardest part of your job:** Dealing with people

**First ever paying job:** Mowing lawns

**If you could do one job for a day, what would it be?**  
Astronaut

**What is the farthest location you have ever traveled?**  
Europe

**If you had to eat one meal everyday for the rest of your life, what would it be?** Grilled Cheese

**When you were a child, what did you want to be when you grew up?** A farmer

**First ever concert:** Country Stampede

**What is the weirdest thing you have ever eaten?** Squid while in Europe

**Favorite vehicle:** A Porsche

**Favorite sport or pastime:** Water skiing

**Pet Peeve:** People not showing up on time

**What do you fear most?** Erin

**What is something that people would be surprised to know about you?** I'm shy

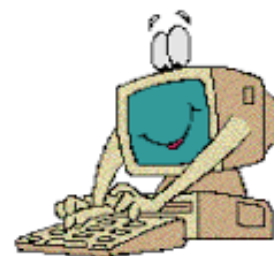
**Motto:** Live life easy because life is hard enough as it is!

**Would you rather be a tiny elephant or a giant hamster?** A tiny elephant

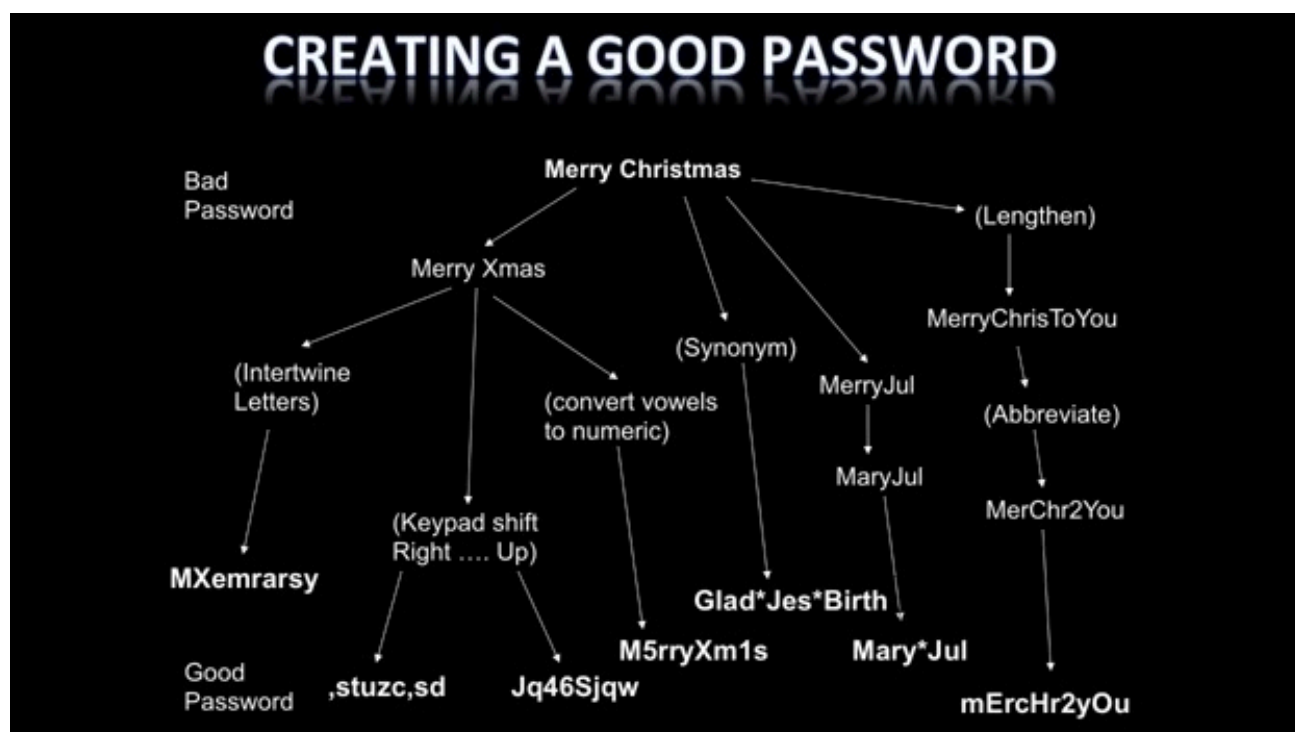


## TECH TIPS

Unless you explicitly know and trust the sender, do not click on links inside of emails. Instead, go directly to the website and log in.



Also, to keep your account safe, here are a few tips on how to create a strong password.



### Staff Shares

If you have anything newsworthy you would like to submit, please email Linda K. Chalker at [lindak@keystonelearning.org](mailto:lindak@keystonelearning.org). Please note there is a deadline for submission, so get your news in early!

The deadline for article/news submission will be by the 12<sup>th</sup> day of each month.



## **InfiniTEXT Repository & Book Scanning Service FREE for All Kansas K-12 Schools**


### **InfiniTEXT is a FREE Repository of Scanned K-12 Accessible Educational Materials**

- ☒ InfiniTEXT contains more than 3,100 textbooks, novels and trade books stored in multiple formats.
- ☒ MP3 (audio), PDF, Kurzweil and other formats, compatible with common assistive technology are available.
- ☒ These materials may be used by K-12 students with qualifying print disabilities.
- ☒ Any Kansas K-12 school can sign up for FREE access.
- ☒ Easy-to-use, self-service website for searching and downloading files.

### **Infinitec Provides FREE Scanning of K-12 Educational Materials NOT Available from InfiniTEXT or Other Programs**

- ☒ We professionally scan, process and verify every page to assure student accessibility.
- ☒ We create complete MP3 (audio), unlocked PDF and other formats.
- ☒ All scanned books are uploaded to InfiniTEXT for access by requesting school as well as all other Kansas educators.

**To learn more, contact Steve Clements - [sclements@ucpnet.org](mailto:sclements@ucpnet.org)**

Funded by a grant from 

 Provides Program Administration

## KANSAS ASSOCIATION OF SCHOOL BOARDS

February 2017

### Repetitive Motion Injuries

Repetitive Motion Injuries (RMI) are a class of injuries and illnesses that result from weeks, months or years of overuse of human joints. Connective tissues can become sore and sometimes unusable from repeated exposure to micro-trauma. Because of the slow onset of symptoms, people sometimes ignore the condition until the symptoms become chronic and permanent injury occurs.

The best way to visualize RMI is to think of each of your joints as a bucket. Micro-trauma from a variety of activities drips into your joint's trauma bucket. Fortunately, your body can heal with time and safely absorb a certain amount of trauma. But if more trauma is placed into the bucket than can be absorbed by the natural healing process, the result can be pain and impaired movement.

RMI is a disorder that is based upon the time, amount and severity of your exposure. RMI disorders occur gradually over a long period of exposure to low-level harmful conditions. A brief exposure to these conditions would not generally cause harm, but a prolonged exposure may, in some people, result in reduced ability to function.

Not all pain will result in long-term disability. Muscle pain often develops after exerting yourself in ways that the body is not accustomed. Luckily, muscles heal very quickly, and even extreme muscle pain will usually diminish within a few days when managed properly.

To minimize the amount of trauma on your body remember the following tips:

1. Always work with your wrists straight.
2. Keep your upper arms positioned near your sides.
3. Work with your shoulders in a relaxed position.
4. Keep your neck straight while working.
5. Keep frequently used items within easy reach.
6. Vary your tasks to allow movements and breaks.



If at any time you need to schedule a meeting in the conference room at Keystone, please contact Linda K. Chalker at [lindak@keystonelearning.org](mailto:lindak@keystonelearning.org)



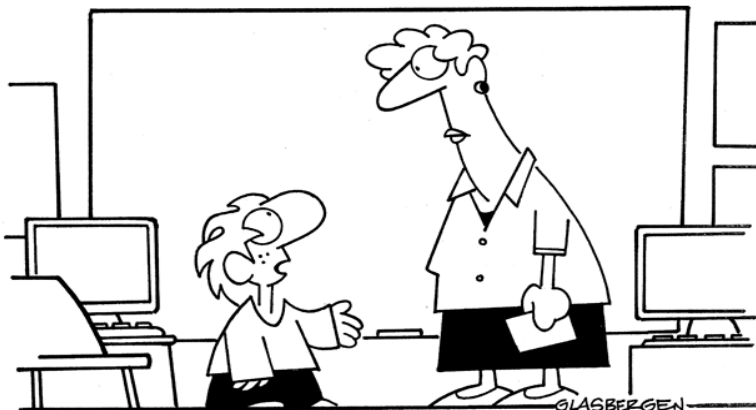


John Dewey Learning Academy would like to thank the following families and organizations for their support during the recent raffle held at the John Dewey Learning Academy's Open House: Casey's General Stores, Inc., First State Bank & Trust, Topeka Housing Authority, Denison State Bank, Leavenworth-Jefferson Electric Company, Margaret & Steve Dick, Diane & Rick Shaw, Ruralgas Co, Inc., Gambino's Pizza of Meriden, Town & Country Motors, Inc., The Barn Bed & Breakfast Inn, Do It Best of Valley Falls, Aahh Some Blossom, F.W. Huston Pharmacy of Oskaloosa, Great Life Golf/Fitness, Kansas City Zoo, King's Construction, Kansas Children's Discovery Center and Easton Lions. Thank you to the community and community members for supporting this effort as well as the crafts the kids made and sold at local holiday open houses.

## Laff with G-Raf



© Randy Glasbergen. [www.glasbergen.com](http://www.glasbergen.com)



"Facebook is a website, but Charlotte's Web is a book. I'm really confused!"



### REMINDER:

Daylight saving time 2017 in Kansas will start at 2:00 AM on Sunday, March 12<sup>th</sup>!

## Count Your Kid In!

### 2016-2017 Screening Schedule



**Call today to schedule a free appointment for your child at one of these locations:**

**February 24-Effingham**

**March 31-Nortonville**

**April 21-Easton**

**May 12-Lecompton**



## FREE INFANT and PRESCHOOL SCREENING CLINICS

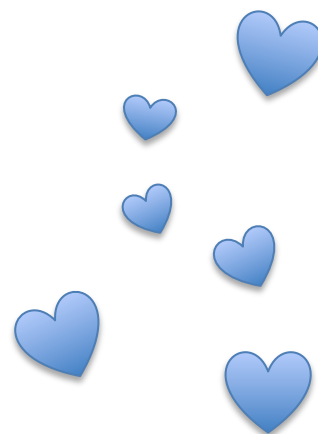
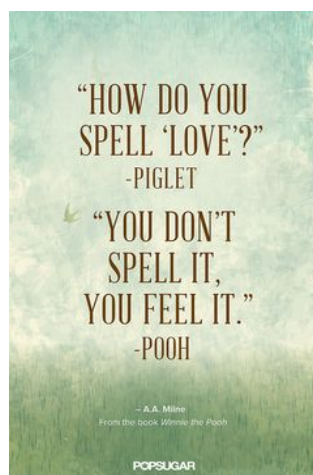


Keystone Learning Services and the Jefferson County Health Department offer Count Your Kid In clinics throughout the school year for infants and preschool children, free of charge. If you have concerns about your child's development, this free screening will provide help for children 0-5 years of age. Children are screened in areas of speech/language development, motor development, concept development, social skills, vision and hearing. Trained professionals in these areas will screen your child. Screenings take place in local community settings and last approximately 1½ hours. Contact Lesa Brose at Keystone Learning Services at 785-876-2214 ext. 201 to schedule an appointment.

### February Screening Information

**WHEN:** Friday, February 24, 2017

**WHERE:** Effingham Union Church, 514 Seabury St., Effingham, KS



500 E. Sunflower Blvd.  
Ozawie, KS 66070  
Phone: 785-876-2214  
Fax: 785-876-2383

[www.keystonelearning.org](http://www.keystonelearning.org)