

THE

## KEYSTONE

Special Edition

*From the Director's Desk.....*

October is Dyslexia Awareness Month. That makes this a great time to learn more about this neurological disability. Dyslexia has an interesting history and two of the prominent people in that history are Dr. Rudolf Berlin and Dr. Samuel Orton. Dr. Berlin was an ophthalmologist working in Germany. He noticed that some of his patients showed similar traits related to an inability to process written information. He coined the term "dyslexia" in 1887. Several decades later in the United States, Dr. Samuel Orton pioneered the study of learning disabilities. Orton, a pathologist who worked with adults with brain damage, became interested in individuals with learning disabilities after noticing similarities between students with dyslexia and patients who had experienced trauma to the left hemisphere of the brain. Orton coined his own name for dyslexia – strephosymbolia - which never caught on. Later, while at the University of Iowa, Orton worked with Amanda Gillingham, a psychologist, to develop a system of instruction to teach phonics/reading skills to students with dyslexia. Their system, the Orton-Gillingham approach, is still in use today.

Much of Orton's work has been validated as we learn more about the brain. Dyslexia is now believed to be genetic in nature and research has identified several chromosomes that appear to contain the genes responsible for dyslexia. As Orton suggested we know that there is a neurological basis for dyslexia. There are differences in the planum temporale and the corpus collosum in affected individuals. You can read more about the history of dyslexia and its impact on the brain by clicking on the links, below.

Dyslexia is thought to affect 5-10% of the population although some studies suggest rates as high as 17 or even 20 percent of the population. Many famous individuals have had been diagnosed with the disorder and serve as great advocates for this challenging disorder. Special education services continue to make a significant difference for students with dyslexia. We're proud to be part of that effort here at Keystone and want to express our thanks to all of our professionals who work to make a difference for all of our learning disabled students. Thanks for all you do. Andy

<http://bit.ly/2dWPEPd>

<http://bit.ly/2e1qhgs>

<http://bit.ly/2dzSB6h>

<http://bit.ly/2dNXGcR>

<http://bit.ly/2dNX2vT>



ISSUE 2, OCTOBER, 2016

Keystone Learning Services

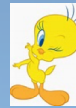
500 E. Sunflower Blvd.  
Ozawkie, KS 66070

785-876-2214

[www.keystonelearning.org](http://www.keystonelearning.org)

GET CONNECTED!

Find us on Facebook  
(Keystone Learning Services)  
and



Twitter  
@KeystoneLeading

And for JDLA's Twitter:  
@JDLA\_KLS

Keystone Learning Services  
OFFICE HOURS

8:00 a.m. - 4:30 p.m.  
Monday - Friday



Check out "Direct from the Director," A Blog  
by Andy Ewing:

<http://www.keystonelearning.org/DirectorBlog>

## Meet the Staff at Keystone Learning Services



My name is Claudia Holmes, and I teach early childhood special education at Oskaloosa Elementary School. This is my 12th year working for Keystone, and my 19th year as an early childhood educator (regular and special education). So I guess you could say, I get paid to play! In other words, I am sometimes an actor, a puppeteer, a counselor, a hugger, a painter, a writer, an author, an illustrator, an engineer, a coach, a comedian, a musician, and a ballet dancing truck driver! Yes, I live in a world of imagination on a daily basis! When I am not working, I enjoy spending time with my three doxie dogs: Franklin, Napoleon (RIP 9/28/16) and Nigel. Although they are very lazy dogs, they do enjoy traveling with my husband, Andy, and I in our "conversion" van we call Bernie. We all love to camp and get outside in nature when we can. Speaking of nature, if I had to describe myself as a plant, it would be the coconut tree! Use your imagination to answer the reasons why, and you are probably accurate!

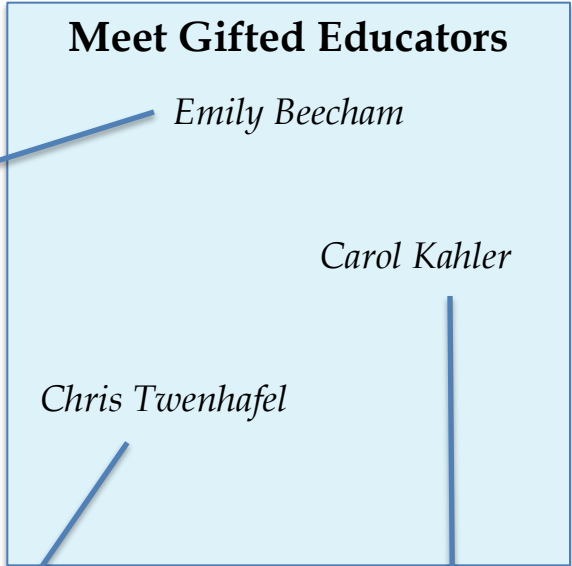
### Meet new teacher, Jennifer Wiseman

My hero is my mom. She taught me how to care and really help others. She showed me how to see the best in people.

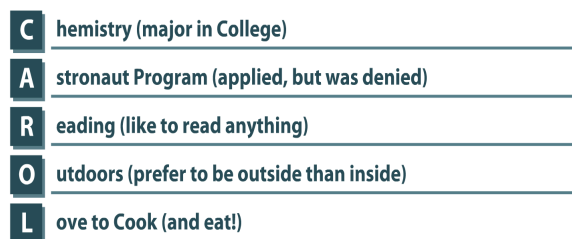
- My favorite things about my career are the look on a student's face when that "lightbulb" clicks on and they truly get a concept.
- I would sing, "I will survive" IF I ever did karaoke...big IF.
- My friends would describe me as caring.
- My students would describe me as weird.
- My favorite teacher was my 3rd grade teacher, Mrs. Sikes. She wore really high heels, had short spiky hair and wore bright red lipstick! I thought she was pretty amazing.
- Stand by Rascal Flatts pretty much sums me up
- If I were a plant I would be a....I don't know. My husband said I would be a goji berry because I'm tough but sweet...I like that so I'll agree with him.

The picture is of me, my husband and our 2 sons on our wedding day.





**CAROL**  
by: Carol





# October Happenings



October 17-CPI Initial Training 8-3

October 18-School Psychologists/Social Workers Meeting 8:30-11:30

October 19-Keystone Board of Directors Meeting 7 p.m.

Oct 20-JDLA Open House & Chili Feed 5:30-7 in the gym

November 1-PDC Meeting 4-5

November 2-Autism Team Meeting 2-4

November 3-CPI Renewal Training 8-12

November 4-CPI Initial Training 8-4

November 15-School Psychologists/Social Workers Meeting 8:30-11:30



## FLU SHOTS at JDLA

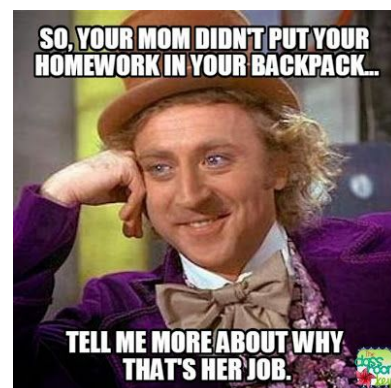
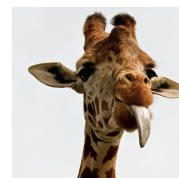
**When:** Morning of October 27

**Where:** JDLA office

**Covered Insurance:**  
BCBS, United Healthcare,  
Coventry, Medicaid

Call Brandy for more info: 785-876-2357

## Laff with G-Raf



## Staff Shares

If you have anything newsworthy you would like to submit, please email Linda K. Chalker at [lindak@keystonelearning.org](mailto:lindak@keystonelearning.org). Please note there is a deadline for submission, so get your news in early!

The deadline for article/news submission will be by the 12<sup>th</sup> day of each month.



## LAMP/CORE INITIATIVE

CHECK OUT THE LINK, BELOW, FOR MORE INFORMATION!

[http://kidss.keystonelearning.org/LAMP\\_CORE](http://kidss.keystonelearning.org/LAMP_CORE)

## KANSAS ASSOCIATION OF SCHOOL BOARDS

October 2016

### PREVENT LADDER INJURIES

Each year there are more than 164,000 emergency room-treated injuries in the U.S. relating to ladders. The U.S. Consumer Product Safety Commission (CPSC) offers the following safety precautions to help prevent these injuries.

- Make sure the weight your ladder is supporting does not exceed its maximum load rating (user plus materials). There should only be one person on the ladder at one time.
- Use a ladder that is the proper length for the job. Proper length is a minimum of 3 feet extending over the roofline or working surface. The three top rungs of a straight, single or extension ladder should not be used for standing.
- Straight, single or extension ladders should be set up at about a 75-degree angle.
- All metal ladders should have slip-resistant feet.
- Metal ladders will conduct electricity. Use a wooden or fiberglass ladder in the vicinity of power lines or electrical equipment. Do not let a ladder made from any material contact live electric wires.
- Be sure all locks on extension ladders are properly engaged.
- The ground under the ladder should be level and firm. Large flat wooden boards braced under the ladder can level a ladder on ground or soft ground. A good practice is to have a helper hold the bottom of the ladder.
- Do not place a ladder in front of a door that is not locked, blocked or guarded.
- Keep your body centered between the rails of the ladder at all times. Do not lean too far to the side while working.
- Do not use a ladder for any purpose other than that for which it was intended.
- Do not step on the top step, bucket shelf or attempt to climb or stand on the rear section of a stepladder.
- Never leave a raised ladder unattended.
- Follow use instruction labels on ladders.



If at any time you need to schedule a meeting in the conference room at Keystone, please contact Linda K. Chalker at [lindak@keystonelearning.org](mailto:lindak@keystonelearning.org)

### **DQC Program Course, November 1<sup>st</sup> at Easton**

Easton is hosting the Data Quality Certification Program course at the Pleasant Ridge Board Office, 32502 Easton Road, Easton, KS 66020, from 9:00am-4:00pm on Tuesday, November 1st.

The course will be for both Data Entry and Administration Programs. At the end of the course, if you choose to, you can take the test and become certified in those areas from KSDE.

Difference between Tracks:

**Data Entry:** Data Entry staff are responsible for the data entry in the student information system or some other repository of data, but the data is then reviewed/submitted by someone else.

**Administrator:** Administrator track is designed for principals, superintendents, and other leadership positions.

Amber Bollin is the contact for those that are interested. Her email is [abollin@easton449.org](mailto:abollin@easton449.org) or phone [913-651-9740](tel:913-651-9740).

For those interested in attending, Amber needs the following information from you:

- first and last name
- what track you would like to complete
- address
- administrator's name.

Amber will pass the information along to Tracy at KSDE.

There is more information on the KSDE website at <http://community.ksde.org/Default.aspx?alias=community.ksde.org/dqcprogram>

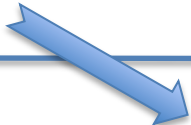
*Coming up!*



### **TASN KIC December 9th Conference**

Speakers: Winnie Dunn, Elizabeth Hamlet, Michelle Lange and James Basham

For more information: <http://bit.ly/2dfAwcD>

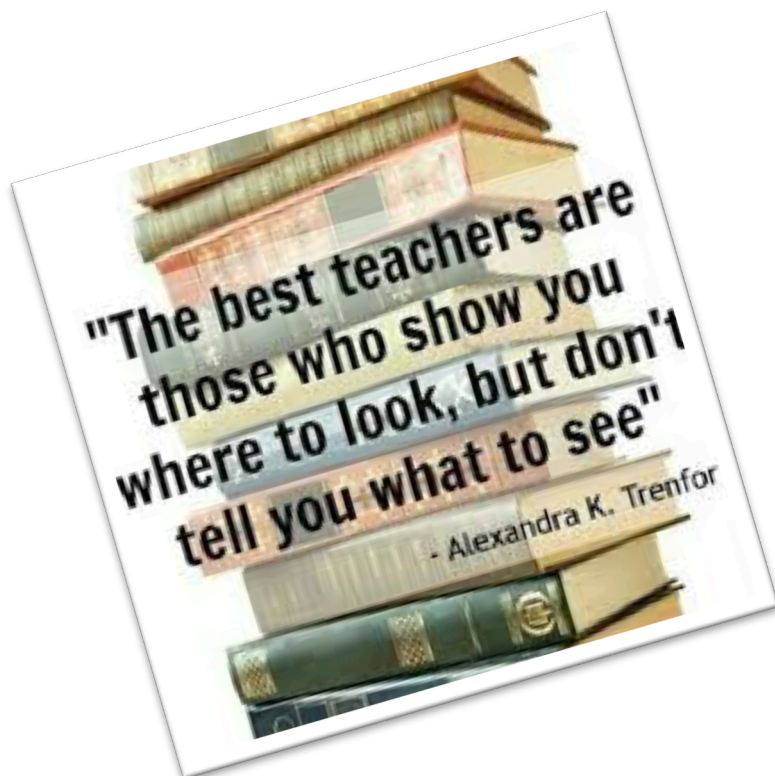


### **Keystone Parents as Teachers Open House and Playgroup**

Pizza Dinner & Fall Fun Family Activities

Monday, *October 17<sup>th</sup>*, 6:00-7:00 p.m. at Keystone Oskaloosa Offices, 404 Park Street

For Pizza, RSVP: [cbraden@keystonelearning.org](mailto:cbraden@keystonelearning.org) or 785-979-3250



### **The CPI Crisis Development Model**

"Defensive and Directive"  
2<sup>nd</sup> in a Series of 4

Last month our focus was on identifying the moment our student started displaying anxiety and what our approach as a staff member should be. This month, our focus is what to do as staff members when our students start to show signs of being defensive.

According to CPI, the definition for defensive is "beginning to lose rationality." At the defensive level we will notice students' ability to listen decreasing. The student will focus only on the issue that has gotten them to this state. This is also where power struggles between students and staff members can develop. As staff members we know we don't want to get into a power struggle with a student. So what are we able to do to help the student return to "classroom ready?"

Staff members need to focus on being directive. The definition provided by CPI for directive is "decelerating an escalating behavior." How can staff members do this? The best solution is to give simple directives. Remember the student's listening skills are decreased. We don't want to overwhelm them with a lot of words. Short, simple, to the point are the directives staff members should be giving. As staff members we can also set limits. Remember the limit that is set by the staff member must be 1) Simple and clear, 2) Reasonable and 3) Enforceable.

The staff member's ultimate goal with this approach is to get compliance from the student. This will signal to the staff member that the student is starting to regain rationality.



## Count Your Kid In!

### 2016-2017 Screening Schedule

Call today to schedule a free appointment for your child at one of these locations:

October 28-Perry

November 18-Meriden

December 16-Valley Falls

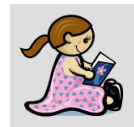
January 20-McLouth

February 24-Effingham

March 31-Nortonville

April 21-Easton

May 12-Lecompton



## FREE INFANT and PRESCHOOL SCREENING CLINICS



Keystone Learning Services and the Jefferson County Health Department offer Count Your Kid In clinics throughout the school year for infants and preschool children, free of charge. If you have concerns about your child's development, this free screening will provide help for children 0-5 years of age. Children are screened in areas of speech/language development, motor development, concept development, social skills, vision and hearing. Trained professionals in these areas will screen your child. Screenings take place in local community settings and last approximately 1½ hours. Contact Lesa Brose at Keystone Learning Services at 785-876-2214 ext. 201 to schedule an appointment.

### October Screening Information

**WHEN:** Friday, October 28, 2016

**WHERE:** Perry United Methodist Church, 220 Oak, Perry, KS

**"No act of kindness,  
no matter how small,  
is ever wasted."**

~ Aesop



500 E. Sunflower Blvd.  
Ozawie, KS 66070  
Phone: 785-876-2214  
Fax: 785-876-2629

[www.keystonelearning.org](http://www.keystonelearning.org)